



# CONSTRUCTION ADVISORY

June 2012



## DECONSTRUCTION OF BUILDING 230 BEGINS

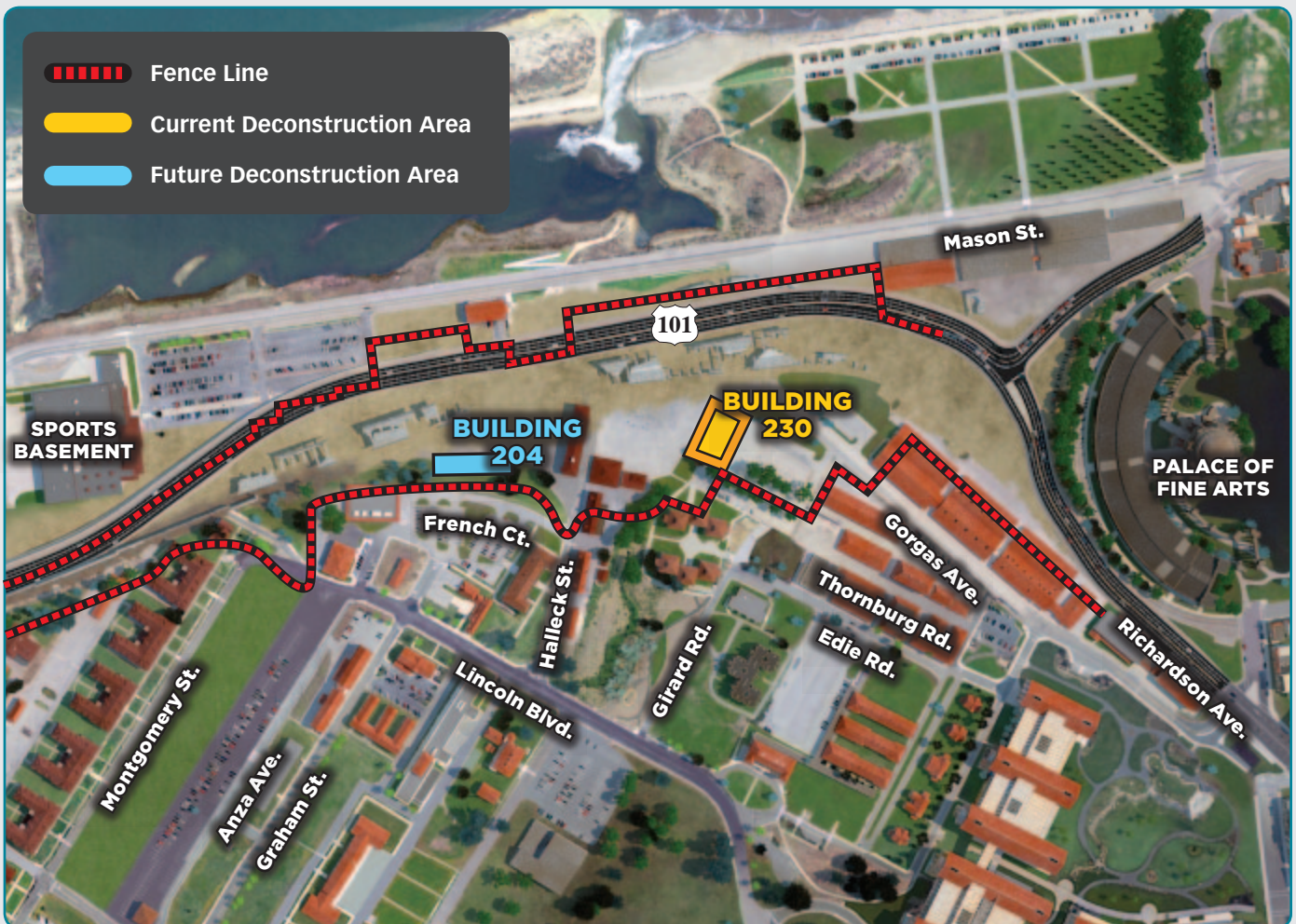
Beginning the week of June 18, crews started deconstruction of Building 230 in the Presidio, the former Archaeology Lab building. This work is a first step to clear the way for future construction at the eastern end of the Presidio Parkway.

Beginning in early July, for approximately three months, the Presidio Trust will begin remediation work in the area around Building 230, a previous gas station site. This will include removing soil approximately 12 feet deep around the entire site.

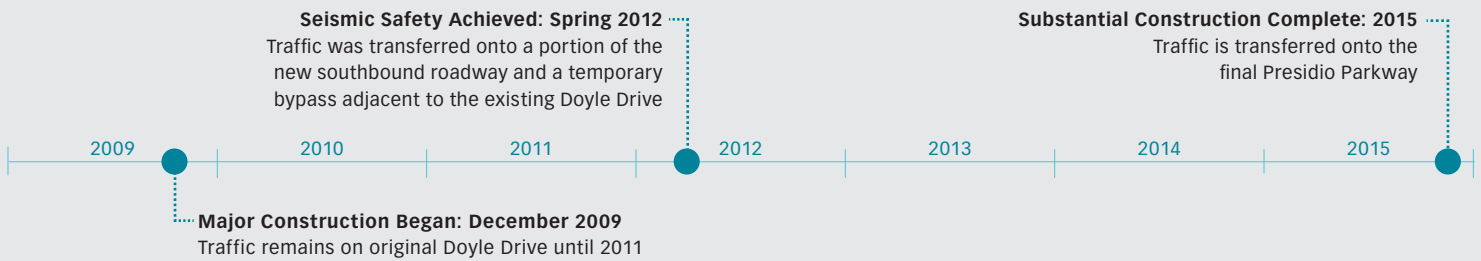
This is the first of several buildings to be removed to make room for the new roadway. Building 204 will be deconstructed in the coming months.

Reusable materials including wood and windows will be salvaged for use by the Presidio Trust on restoration projects throughout the park. The deconstruction of Building 230 will take approximately one month.

All dates are subject to change due to weather and unforeseen conditions. Please visit [www.PresidioParkway.org](http://www.PresidioParkway.org) for up-to-date information.



## CONSTRUCTION MILESTONES



### ABOUT THE DOYLE DRIVE REPLACEMENT PROJECT

The replacement of Doyle Drive with the Presidio Parkway is a collaborative effort led by the California Department of Transportation, the San Francisco County Transportation Authority, and the Federal Highway Administration.

Doyle Drive was structurally and seismically deficient at the start of construction and is being replaced. The Presidio Parkway is based on a worldclass design that will improve the seismic, structural and traffic safety of the roadway. It also will be more sensitive to community needs and to the national park setting, reducing impacts on biological, cultural, historical and natural resources as well as the surrounding neighborhoods.

#### HIGHLIGHTS OF THE NEW DESIGN INCLUDE:

- A parkway with two sets of short tunnels, a wide landscaped median, traffic calming transitions to city streets and the inclusion of safety shoulders
- A spectacular regional gateway that respects the natural contours of the surrounding area and complements the unique environment of San Francisco and the Presidio, a national park
- New direct access to the Presidio and enhanced views
- A more centralized location for transit connections
- Enhanced pedestrian connections within the Presidio to the Main Post, Crissy Marsh, the National Cemetery and historic batteries
- Reduced light and noise intrusion at Crissy Field


### CONSTRUCTION OVERVIEW


Construction of the Doyle Drive replacement, the Presidio Parkway, began in December 2009, more than a year ahead of schedule, due to \$122 million from the American Recovery and Reinvestment Act of 2009.


Major construction of the new roadway will take approximately six years to complete and has been planned in two major phases in order to keep traffic flowing during the replacement. Seismic safety was achieved in spring 2012 after the completion of the first phase.

Major construction is expected to be complete in 2015 and will be followed by an extensive landscaping program. An ongoing series of advisories will update the public on what to expect as work progresses.

#### RECEIVE THE MOST UP-TO-DATE INFORMATION!

 [www.PresidioParkway.org](http://www.PresidioParkway.org)

 PresidioParkway

 [info@presidioparkway.org](mailto:info@presidioparkway.org)

 (415) 295-4636

 Find us on Facebook



 Call 511 | [511.org](http://511.org)